

Firmware Update Instructions

Keysight EDU3xxxxA

Prerequisite Information

NOTE

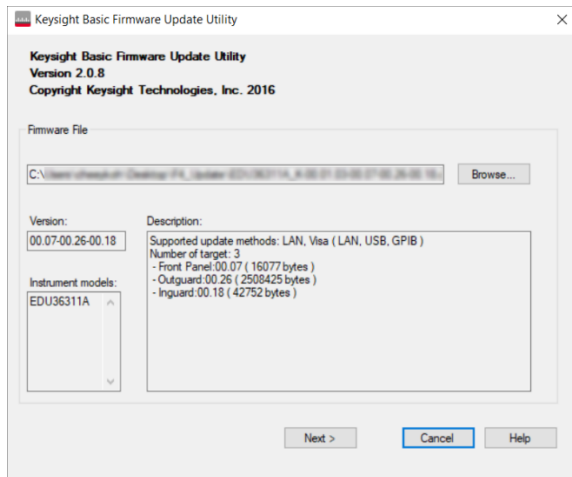
For a Windows XP system, the Basic Firmware Update Utility requires Windows XP Service Pack 3 and above.

1. On the instrument, determine the firmware version currently installed.
 - a. For EDU36311A model: Press **Utilities** > **Help** > **About**.
 - b. For EDU34450A model: Press **[Utility]** > **Help** > **About**.
 - c. For EDU33211A and EDU33212A models: Press **[System]** > **Help** > **About**.
2. Download the latest firmware version for your instrument:
 - a. For EDU36311A model: Go to www.keysight.com/find/EDU36311A-sw and use the links there to find the latest firmware version. If there is a newer firmware version available, download it to your PC. Otherwise, no firmware update is necessary.
 - b. For EDU34450A model: Go to www.keysight.com/find/EDU34450A-sw and use the links there to find the latest firmware version. If there is a newer firmware version available, download it to your PC. Otherwise, no firmware update is necessary.
 - c. For EDU33211A and EDU33212A models: Go to www.keysight.com/find/EDU33211A-sw and use the links there to find the latest firmware version. If there is a newer firmware version available, download it to your PC. Otherwise, no firmware update is necessary.
3. Download and install the *Keysight IO Library Suite* from www.keysight.com/find/iosuite if it has not been installed on your PC.
4. Install the *Keysight Basic Firmware Update Utility* on your PC.
5. Retrieve and record the I/O interface connectivity information from the instrument.
 - a. For EDU36311A model: Press **Utilities** > **I/O Config**.
 - b. For EDU34450A model: Press **[Utility]** > **I/O Config**.
 - c. For EDU33211A and EDU33212A models: Press **[System]** > **I/O Config**.
6. For firmware recovery:
 - a. Go to the C:\Program Files (x86)\Keysight\BasicFirmwareUpdate\Driver folder to install the USB driver. Choose the Win7 folder if you are running Windows 7 or choose the Win8 folder if you are running Windows 8.
 - b. Go to the x64 folder and install the dpinst_amd64.exe file (for 64-bit PC) or go the x86 folder and install the dpinst_x86.exe file (for 32-bit PC).

Update Instrument Firmware

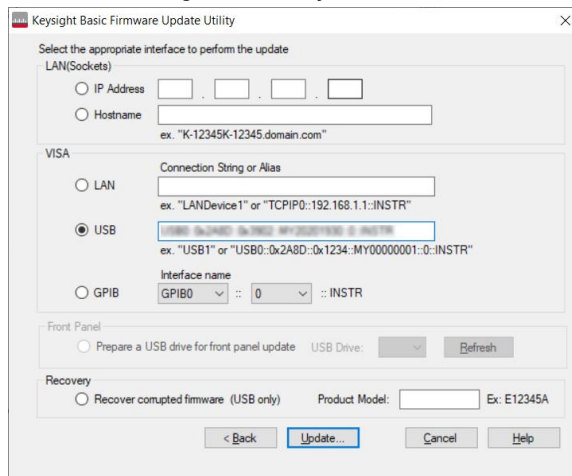
CAUTION Do not turn off the instrument during the update.

1. Unzip the downloaded firmware file to obtain the EDU3xxxxA_K-xx.XX.xx-XX.xx-XX.xx-XX.xx.dfu file.
2. Run the Keysight Basic Firmware Update Utility and click **Browse** to locate the .dfu file.
3. Select the firmware file and click **Open**.
4. Click **Next**.



Select the I/O interface (LAN or USB) that connects the instrument to your PC.

5. Enter the settings necessary for communication (IP address or hostname, or USB ID).



Click **Update....** Verify the instrument firmware information and the version you are updating.

6. If the information is accurate, click **Begin Update** to start the firmware update.
7. Once the firmware update is complete, the instrument will automatically reboot.

NOTE Click **Update another instrument** if you would like to update another instrument with the same firmware file.

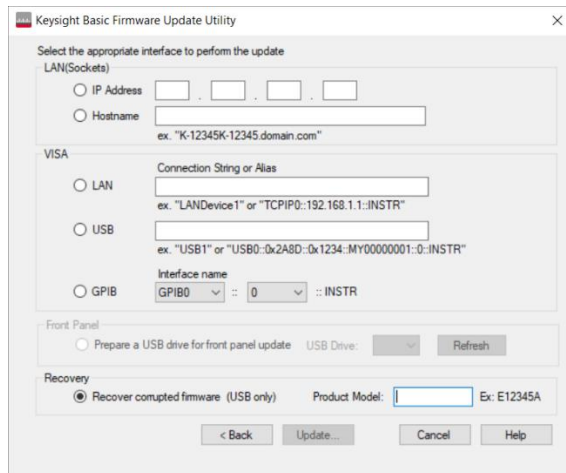
Recover Corrupted Firmware

NOTE

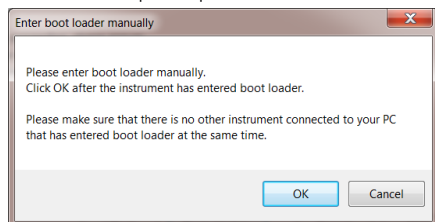
The **Recover corrupted firmware (USB only)** option should only be selected if the firmware of the instrument is corrupted. When this happens, your PC will no longer be able to communicate with the instrument through USB or LAN connection.

Make sure there is only one instrument connected to your PC when performing firmware recovery.

1. If the firmware update was interrupted midway or unsuccessful, click **Restart Firmware Update** to retry again.
2. If that fails, select the **Recover corrupted firmware (USB only)** option from the Keysight Basic Firmware Update Utility and enter the product model.



3. Click **Update...**, review the firmware information, and then click **Begin Update**.
4. You will be prompted to enter the instrument's boot loader manually.



Power off the instrument.

5. To enter the boot loader for your instrument:
 - a. For EDU36311A model: Press **[Meter View]** and **[Enter]** on the instrument simultaneously while powering on the instrument.
 - b. For EDU34450A model: Press **[DCV]** and **[-]** on the instrument simultaneously while powering on the instrument.
 - c. For EDU33211A model: Press **[System]** and Channel 1 **[On/Off]** on the instrument simultaneously while powering on the instrument.
 - d. For EDU33212A model: Press **[System]** and Channel 2 **[On/Off]** on the instrument simultaneously while powering on the instrument.
6. Once the instrument has entered boot loader, click **OK** to start the firmware recovery.

This information is subject to change without notice.

© Keysight Technologies 2020
Edition 1, December 15, 2020
Printed in Malaysia



5971-7005

www.keysight.com